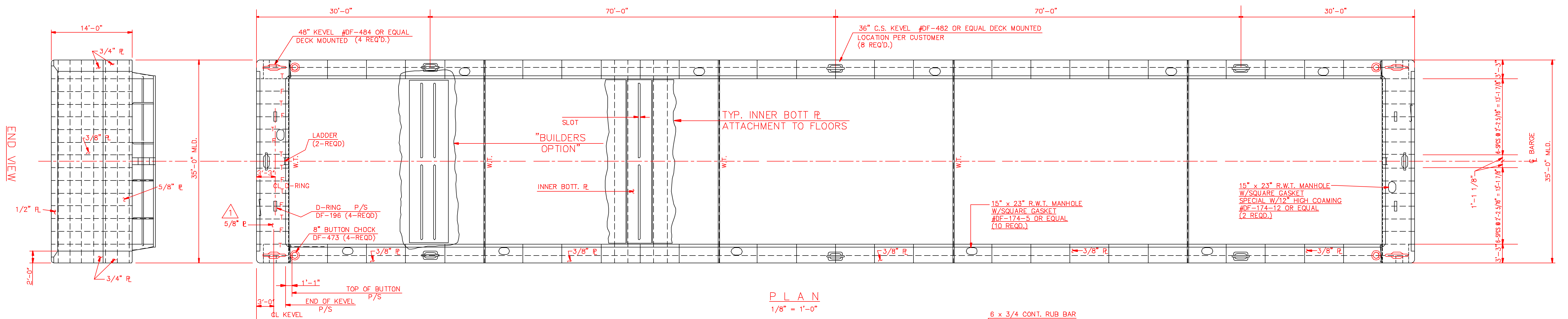
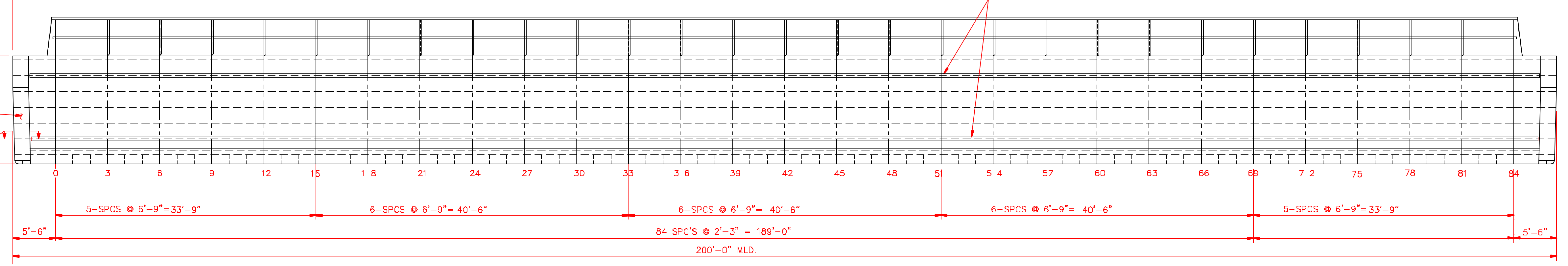


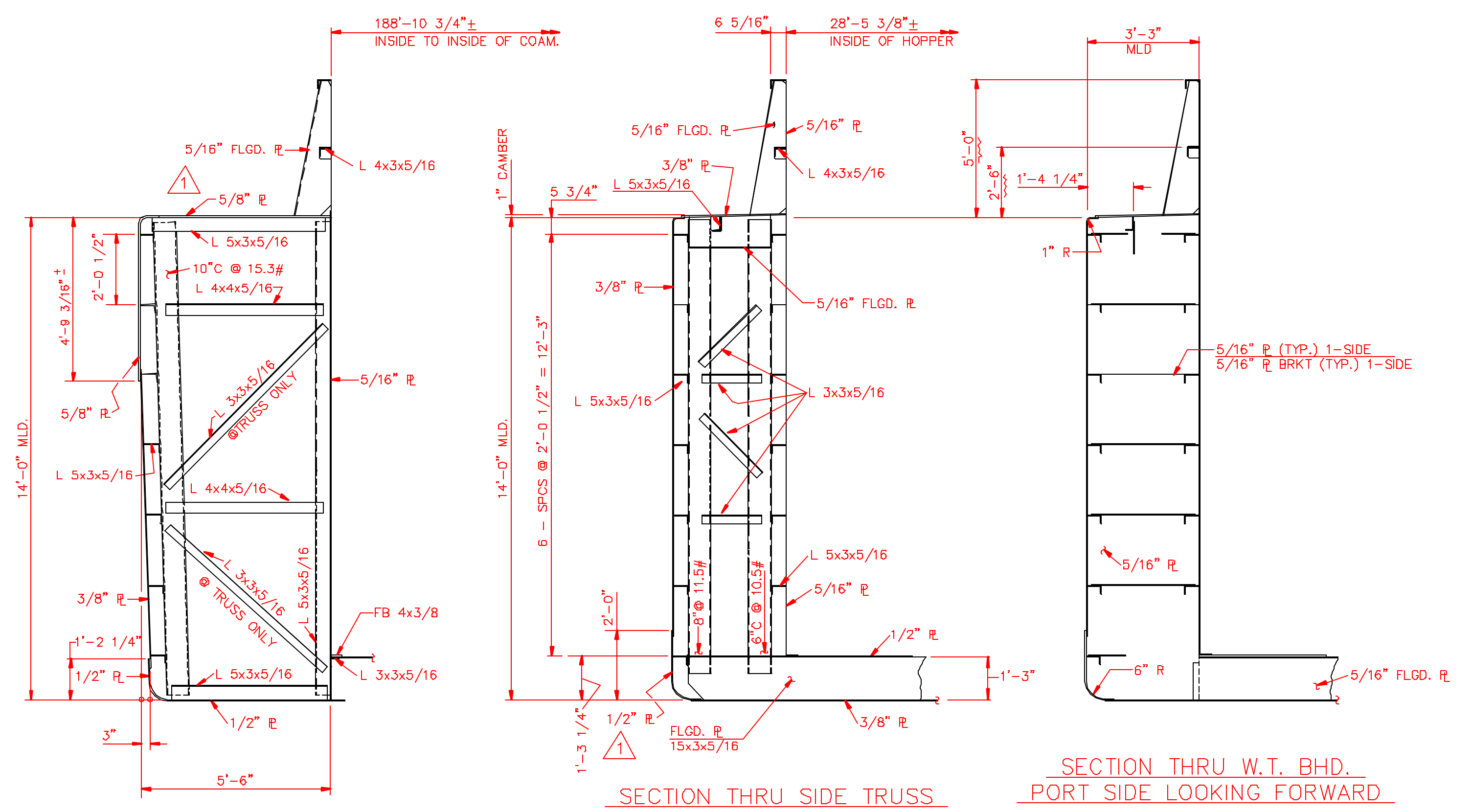
NOTE 1/2" DBLR PL ALL DECK FTGS ON 3/8" OR THINNER PL



PLAN
1/8" = 1'-0"



ELEVATION
1/8" = 1'-0"



SECTION @ STERN FRAME & TRUSS
3/8" = 1'-0"

SECTION THRU SIDE TRUSS
PORT SIDE LOOKING FORWARD
3/8" = 1'-0"

SECTION THRU W.T. BHD.
PORT SIDE LOOKING FORWARD
3/8" = 1'-0"

GENERAL NOTES:
1) TOTAL VOLUME OF HOPPER TO TOP OF COAMING: 95,158 CU. FT.(APPROX)
2) ALL INNER BOTTOM, WING AND END COMPARTMENTS ARE DRY VOIDS

REV.#1 PER CUSTOMER OPTION CHANGED MIDBODY BILGE PLATE FROM 5/8" TO 1/2", BOW AND STERN DECK PLATE 5/16" TO 5/8" (4-23-03) EV
REV.#2 CHANGED QUANTITY (EV 6-9-03)

FINAL

ISSUE DATE -
REV. DATE - 6-9-03

REVISED
6-9-03

JOB NO.	
DRAWN BY E.V.	4-4-03
CHECKED BY	DATE
APPVD	DATE
APPVD A B S	DATE
APPVD U S C G	DATE
APPVD	DATE
TAX NO.	SHIP ORDER
	HULL NO.

TRINITY MARINE PRODUCTS, INC.
furnishes these drawings and specifications on a confidential basis with an expressed understanding that they will not be copied in any manner, used for manufacture, sold, transferred, nor used to the detriment of said firm without written permission. the recipient further agrees not to disclose these contents hereof to any other parties except for those specific purposes for which this drawing was issued.

UDI-10
HOPPER BARGE (LIFT COVERS)
200' X 35' X 14'-0" BOX
GENERAL ARRANGEMENT 2
(FOR BARGE #1 THRU #30 ONLY)

SIZE	DWG NO.	REV.
D	75146G	2
SCALE:	SHEET 1 OF	
		WAS E4023A