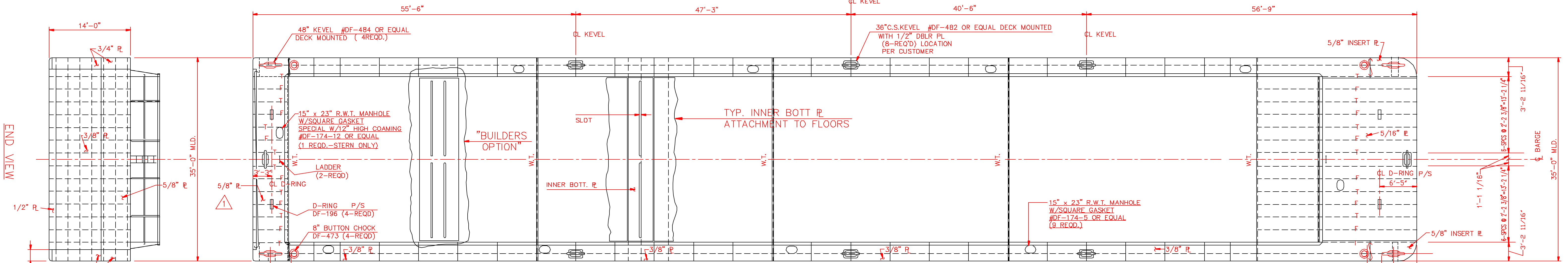
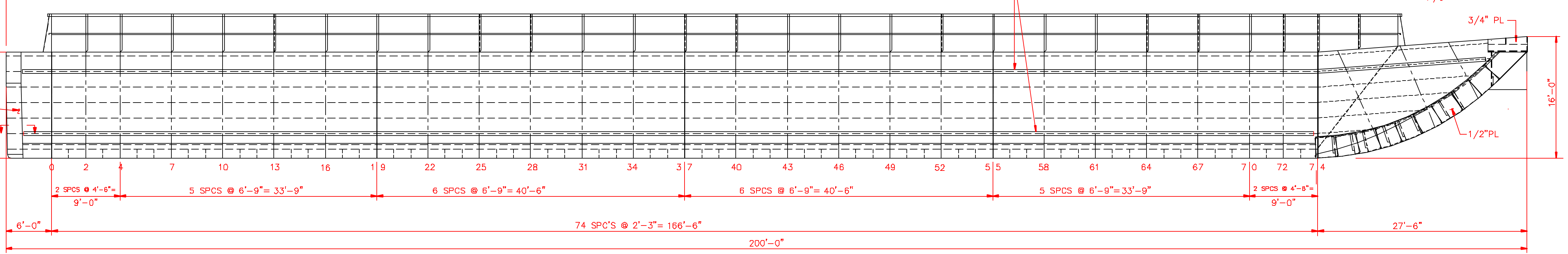


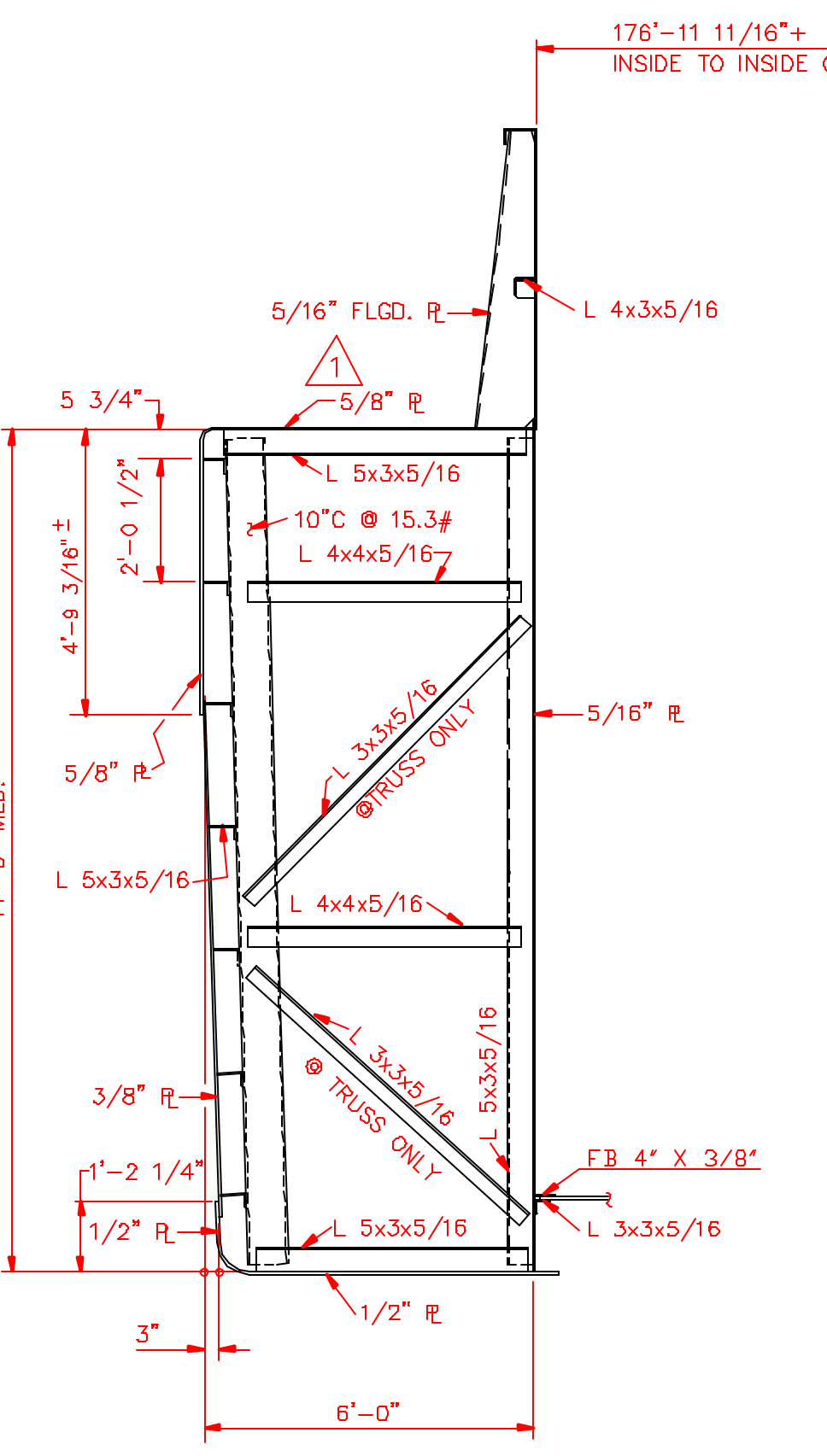
NOTE : 1/2" DBLR PL FOR ALL DECK FTGS ON 3/8" OR THINNER PL



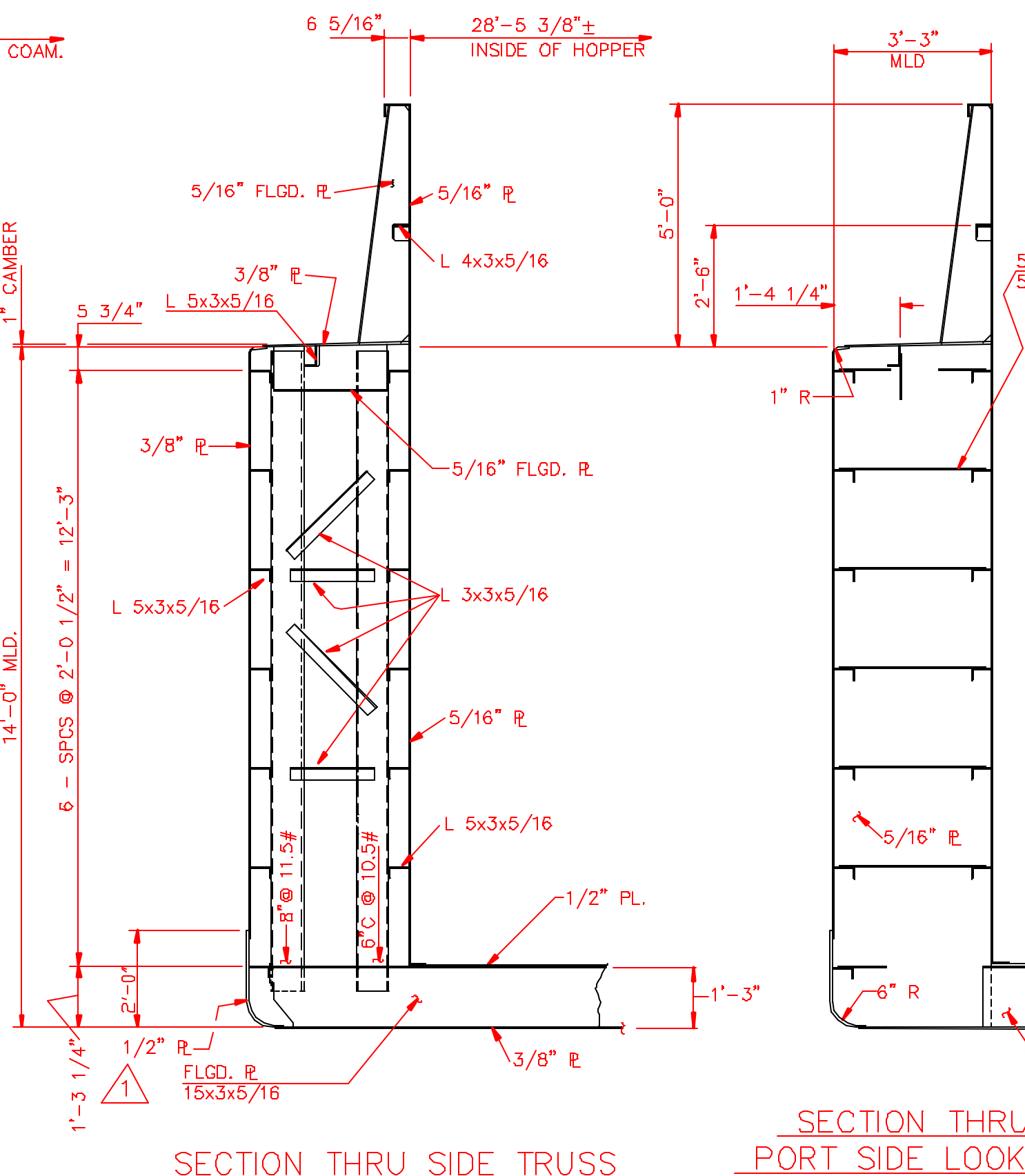
PLAN  
1/8" = 1'-0"



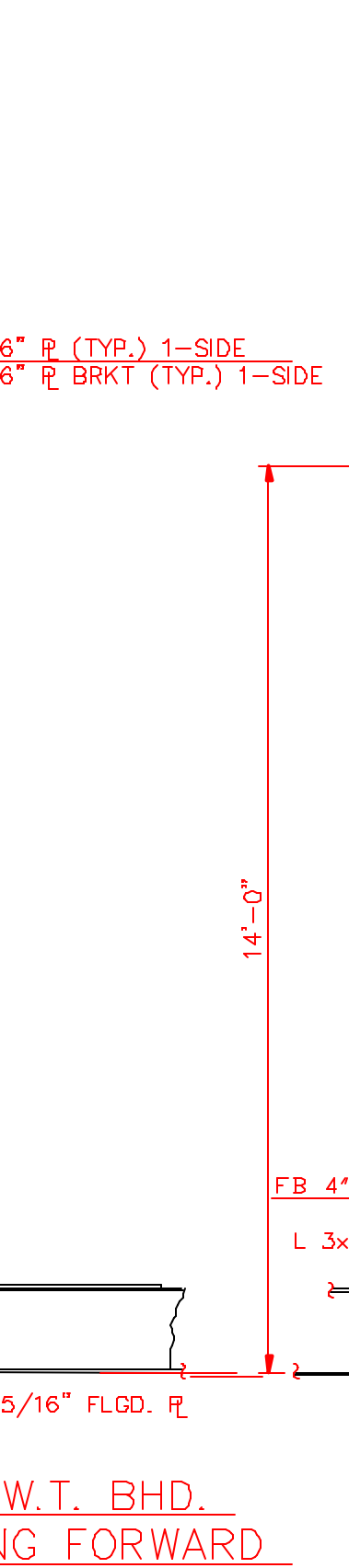
ELEVATION  
1/8" = 1'-0"



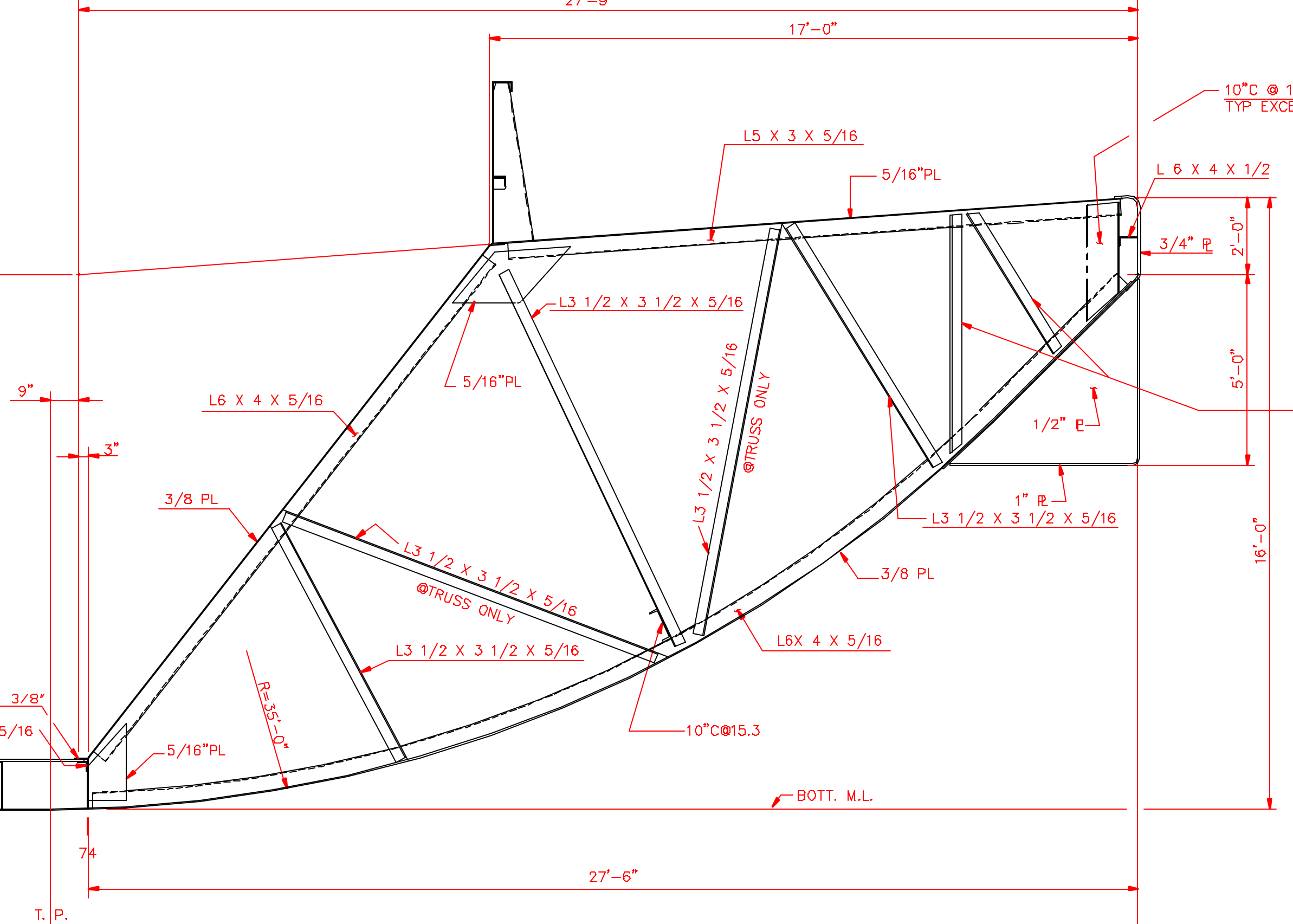
SECTION @ STERN FRAME & TRUSS  
3/8" = 1'-0"



SECTION THRU SIDE TRUSS  
PORT SIDE LOOKING FORWARD  
3/8" = 1'-0"



SECTION THRU W.T. BHD.  
PORT SIDE LOOKING FORWARD  
3/8" = 1'-0"



SECTION @ RAKE FRAME & TRUSS

GENERAL NOTES:  
1) TOTAL VOLUME OF HOPPER TO TOP OF COAMING: 87,306 CU. FT.(APPROX)  
2) ALL INNER BOTTOM, WING AND END COMPARTMENTS ARE DRY VOIDS

REV.#1 PER CUSTOMER OPTION CHANGED MIDBODY BILGE, RAKE KNUCKLE PLATE FROM 5/8" TO 1/2", STERN DECK PLATE 5/16" TO 5/8" (4-23-03) EV  
REV.#2 CHANGED QUANTITY ( EV 6-9-03)

REVISED  
6-9-03

DRAWN BY: E.V.	4-4-03
CHECKED BY:	DATE
APPVD	DATE
APPVD A B S	DATE
APPVD U S C G	DATE
APPVD	DATE
DSR NO:	HULL NO.

TRINITY MARINE PRODUCTS, INC. furnishes these drawings and specifications on a confidential basis with an expressed understanding that they will not be copied in any manner, used for manufacture, sold, transferred, nor used to the detriment of said firm without written permission. The recipient further agrees not to disclose these contents hereof to any other parties except for those specific purposes for which this drawing was issued.

UDI-10  
HOPPER BARGE (LIFT COVERS)  
200' X 35' X 14'-0" RAKE  
GENERAL ARRANGEMENT 2  
(FOR BARGE # 1 THRU # 30 ONLY)

SIZE D	DWG NO. 75147G	REV. 2
SCALE:	SHEET 1 OF	

WAS E3817  
WAS E4023

10 9 8 7 6 5 4 3 2