

**GULFMASTER 1 - CHARACTERISTICS**

GENERAL CAPACITIES

LENGTH OA	180' - 0"
WIDTH	54' - 0"
DEPTH	12' - 0"
LOADED DRAFT (MAX ABS)	9' - 5 7/8"
LIGHT DRAFT	1' - 11" (APPROX.)
UNIFORM DECK LOAD	4,000 PSF
CARGO CAPACITY AT LOADLINE	2,279.5 S.T.
TONS PER INCH IMMERSION	SEE CHART BELOW
HULL WEIGHT (ABS)	544.3 S.T.

BALLAST TANK CAPACITIES

	PORT	CENTER	STRB
BOW TANK	21,938 gal	21,938 gal	21,938 gal
TANK 1	62,693 gal	62,693 gal	62,693 gal
TANK 2	62,693 gal	62,693 gal	62,693 gal
TANK 3	62,693 gal	62,693 gal	62,693 gal
TANK 4	41,795 gal	41,795 gal	41,795 gal
STERN TANK	20,898 gal	20,898 gal	20,898 gal

NOTE: BALLAST TANK CAPACITIES ARE SHOWN AS 97% OF TOTAL CAPACITY

HYDROSTATIC TABLE

MLD. DRAFT	DISPLACEMENT		LCB (AFT OF M.S.)	MT/in (FRESH WATER)	TPI (FRESH WATER)
	FRESH WATER	SALT WATER			
1.0 ft	277.8 ST	284.9 ST	7.55 ft	321 FT-ST/in	23.28 ST/in
2.0 ft	558.6 ST	572.8 ST	7.11 ft	328 FT-ST/in	23.52 ST/in
3.0 ft	842.4 ST	863.9 ST	6.66 ft	335 FT-ST/in	23.77 ST/in
4.0 ft	1,129.2 ST	1,157.9 ST	6.21 ft	342 FT-ST/in	24.02 ST/in
5.0 ft	1,419.0 ST	1,455.1 ST	5.76 ft	350 FT-ST/in	24.27 ST/in
6.0 ft	1,711.8 ST	1,755.3 ST	5.31 ft	357 FT-ST/in	24.52 ST/in
7.0 ft	2,007.5 ST	2,058.7 ST	4.85 ft	364 FT-ST/in	24.77 ST/in
8.0 ft	2,306.3 ST	2,365.0 ST	4.40 ft	372 FT-ST/in	25.02 ST/in
9.0 ft	2,608.1 ST	2,674.5 ST	3.94 ft	379 FT-ST/in	25.27 ST/in
10.0 ft	2,911.3 ST	2,985.5 ST	3.53 ft	379 FT-ST/in	25.27 ST/in
11.0 ft	3,214.6 ST	3,296.5 ST	3.19 ft	379 FT-ST/in	25.27 ST/in
12.0 ft	3,517.9 ST	3,607.4 ST	2.92 ft	379 FT-ST/in	25.27 ST/in

NOTE: DISPLACEMENT INCLUDES HULL WEIGHT

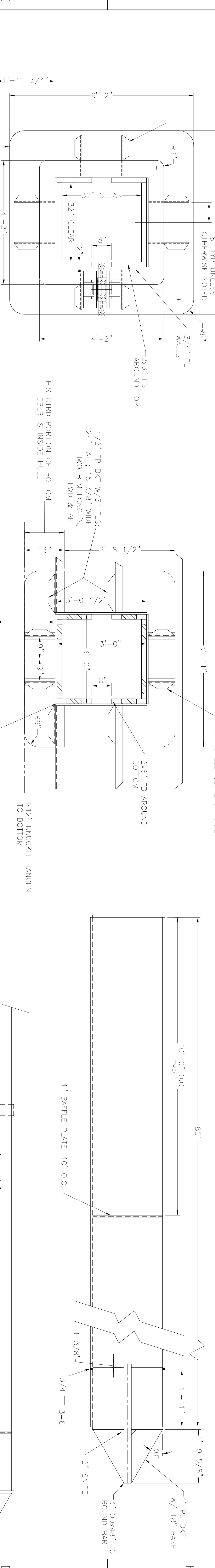
ABBREVIATIONS:

S.T.	-	SHORT TONS
MLD.	-	MOLDED DRAFT
M.S.	-	MIDSHIP

REV	DESCRIPTION	DATE	BY
A	ADOPT SHIP DIMENSIONS	1/6/11	EG

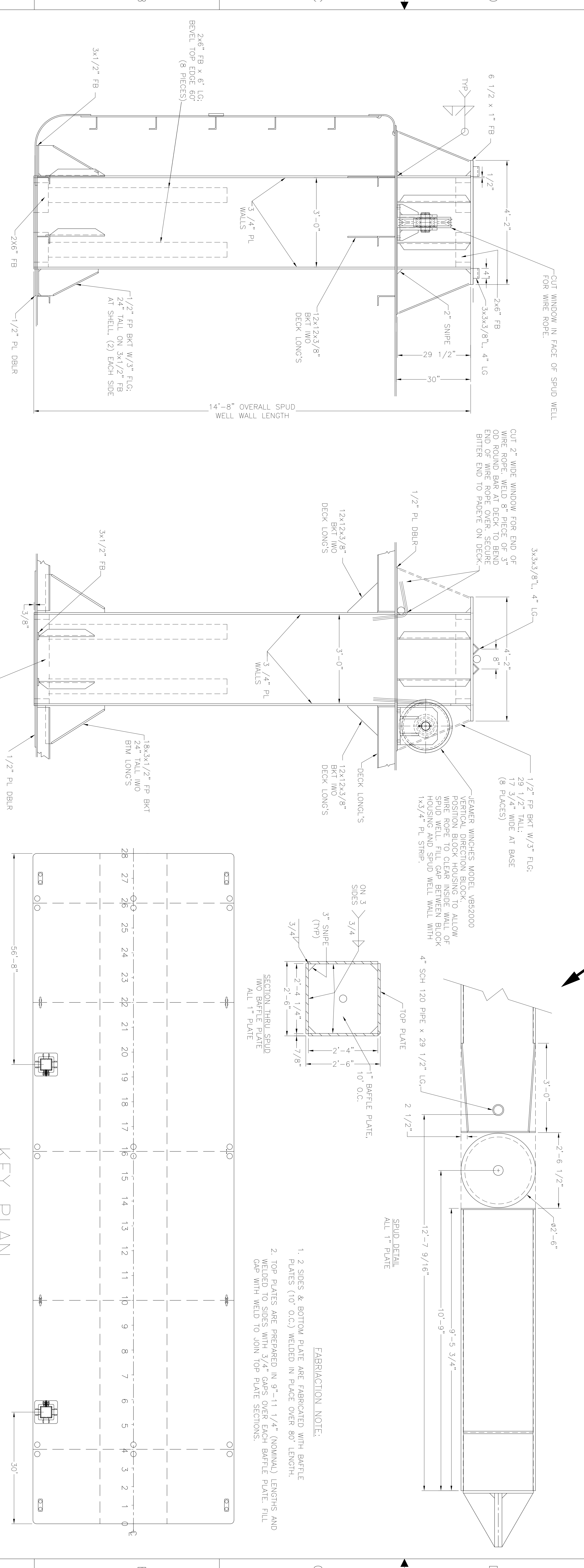
  

REV	DESCRIPTION	DATE	BY
1	180' x 54' x 12' DECK BARGE		
2	SPUD WELL ARR'GT & DETAILS		



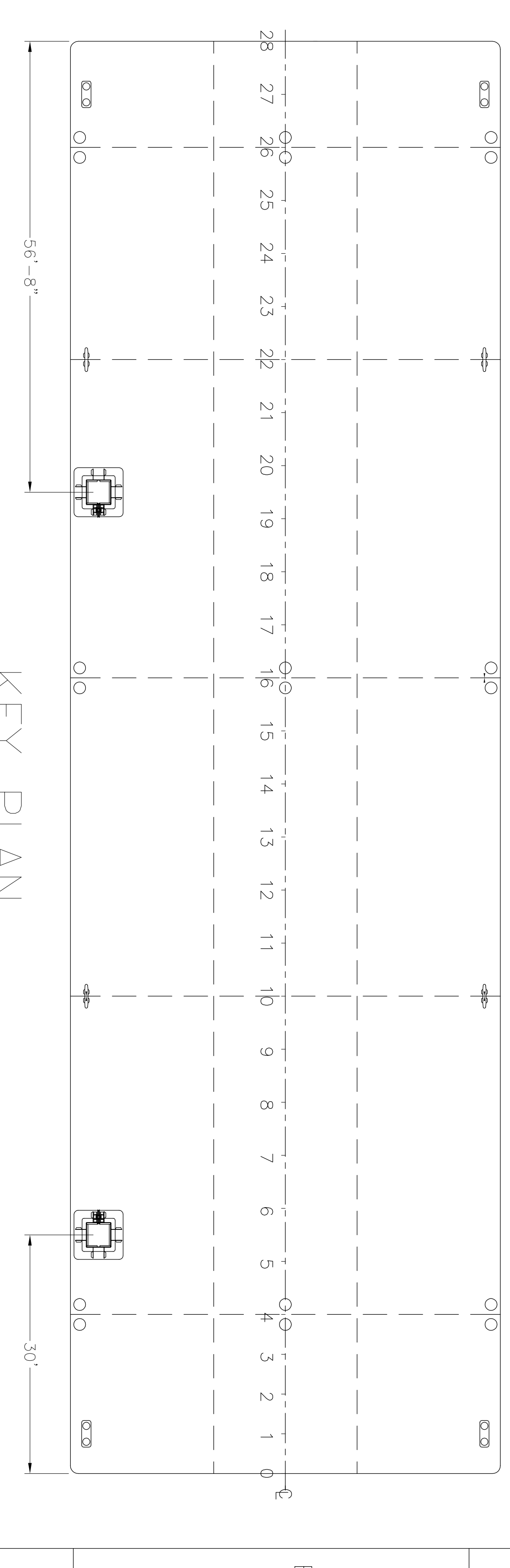
DECK PLAN

BTM PLAN

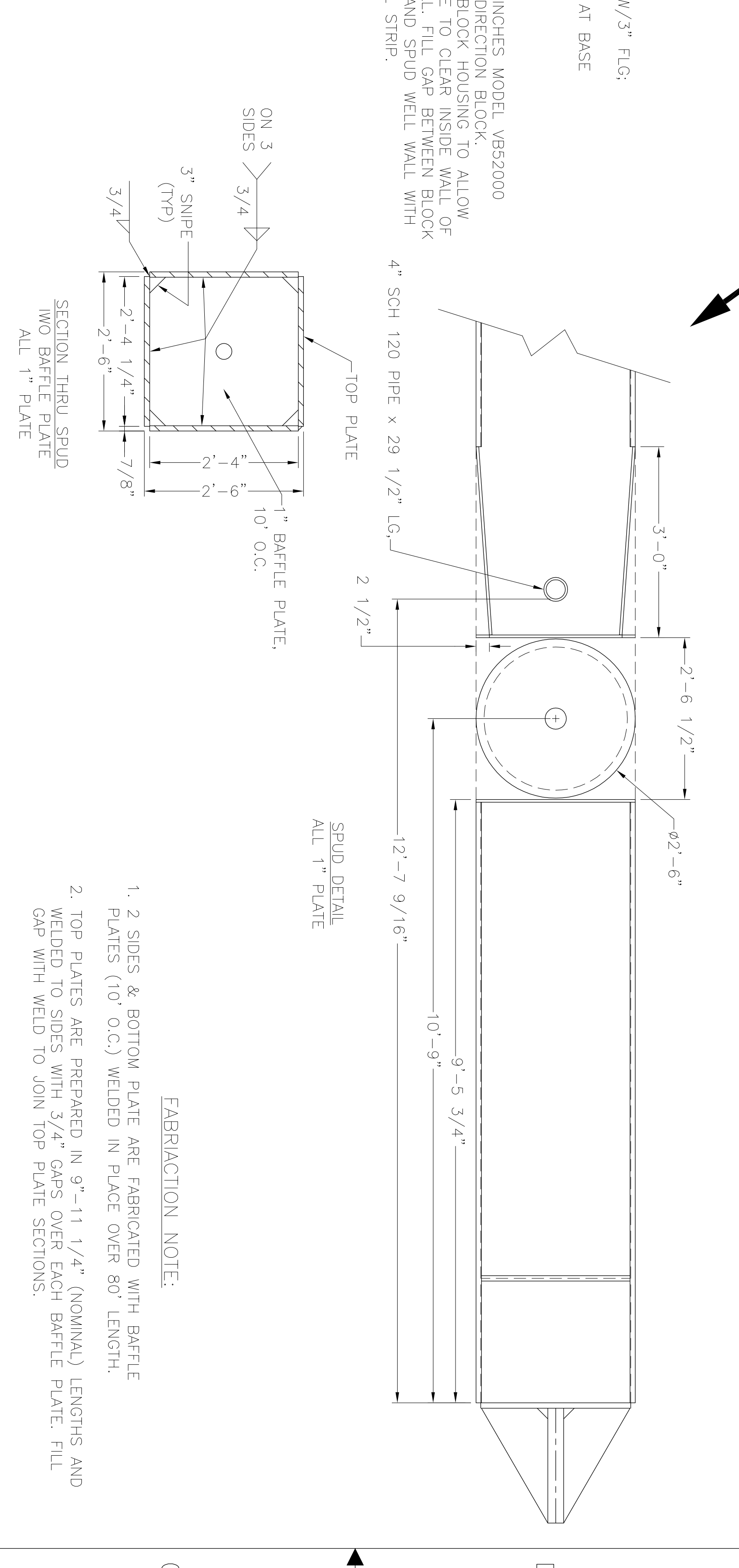


TRANS'V SECTION

LONG'L ELEVATION



KEY PLAN



FABRICATION NOTE:

SPUD DETAIL

NOTES

1. ALL SPUDWELL COMPONENTS MIN. 5/16" CONT. WELDS ALL AROUND UNLESS OTHERWISE NOTED.
2. SPUDWELLS W/T. TO THE SATISFACTION OF THE SURVEYOR.
3. TWO SPUD WELLS REQUIRED PER SHIPSET.

STRUCTURAL ARRANGEMENTS

0942 S-1



ST. JOHNS SHIP BUILDING

180' x 54' x 12' DECK BARGE

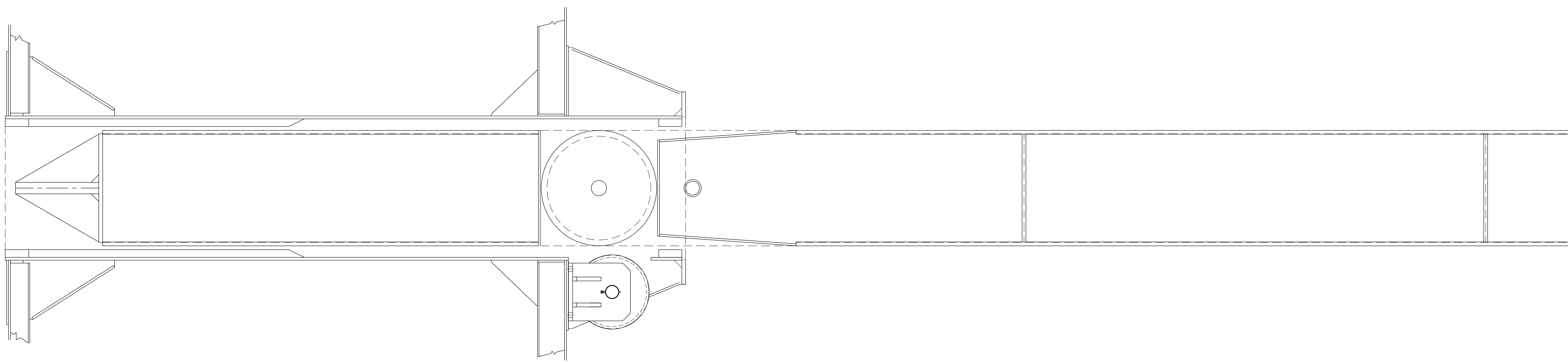
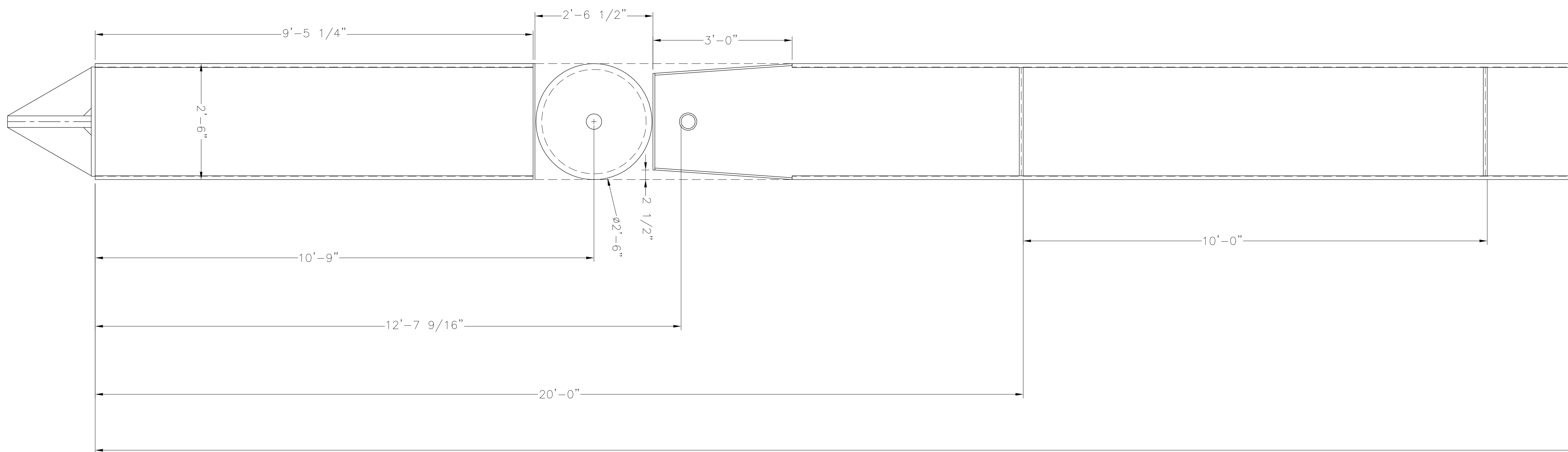
REFERENCES

This drawing, design concept, and specifications are the property of GLOWACKI ENGINEERING and are furnished on a confidential basis with an expressed understanding that they will not be copied in any manner, used for manufacture, sold, transferred, or otherwise disseminated without the express written permission of the recipient. Further, the recipient agrees not to disclose these contents to any third party without the express written permission of GLOWACKI ENGINEERING. This drawing was issued on 09/23/11.

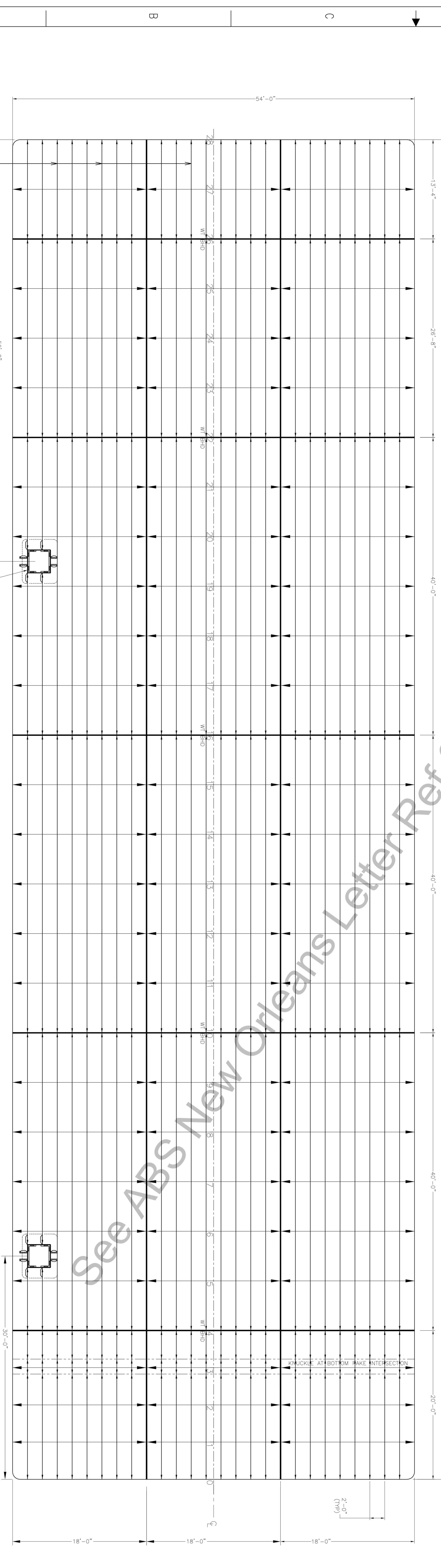
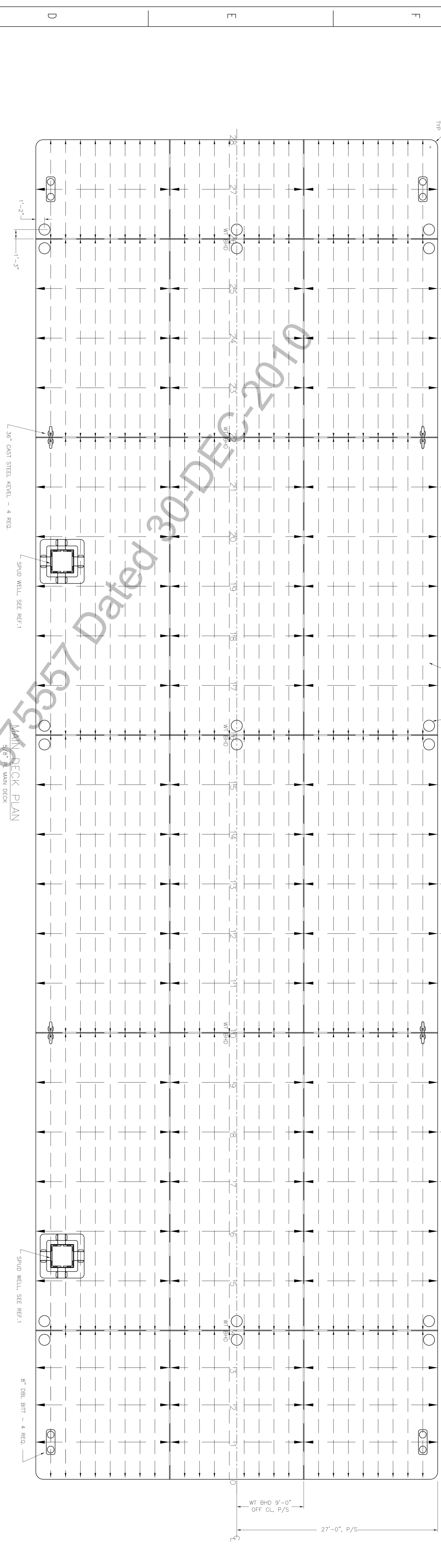
GLOWACKI ENGINEERING  
 4425 EAST WEST PARKWAY, STE 10  
 JACKSONVILLE, FLORIDA 32216  
 PHONE (904) 278-8870  
 FAX (904) 278-8828

ST. JOHNS SHIP BUILDING  
 180' x 54' x 12' DECK BARGE  
 DRAWING NUMBER 0942 S-2  
 SCALE: 3/4"=1'-0" & AS NOTED

SHEET 1 OF 1



REV	DESCRIPTION	DATE	BY
A	MSC CHANGES PER VERO COMMENTS	9/16/09	EG
B	INITIAL MODIFICATIONS TO INCREASE AMBARGE DECK LOAD CAPABILITY TO 4,000 PSF	10/27/10	EG
C	FINAL MODS TO INCREASE AMBARGE DECK LOAD CAPABILITY TO 4,000 PSF. APPROV REF: 11/19/10	11/19/10	EG



DIAGONAL TRANSOM BRACING TWO THESE 3 LONG'S P/S SEE STRUCTOR DETAIL

BOTTOM PLAN  
1/2" PL. BOTTOM SHELL

ALL COMPARTMENTS VOID DECK SCANTLINGS REVIEWED FOR MAX. UNIFORM DRY LOAD OF 4000 PSF HULL MATERIALS TO SUPERVISOR'S SATISFACTION



NO	TITLE	DRAWING NUMBER
1	SPUD WELL ARRGT & DETAILS	0942 S-2

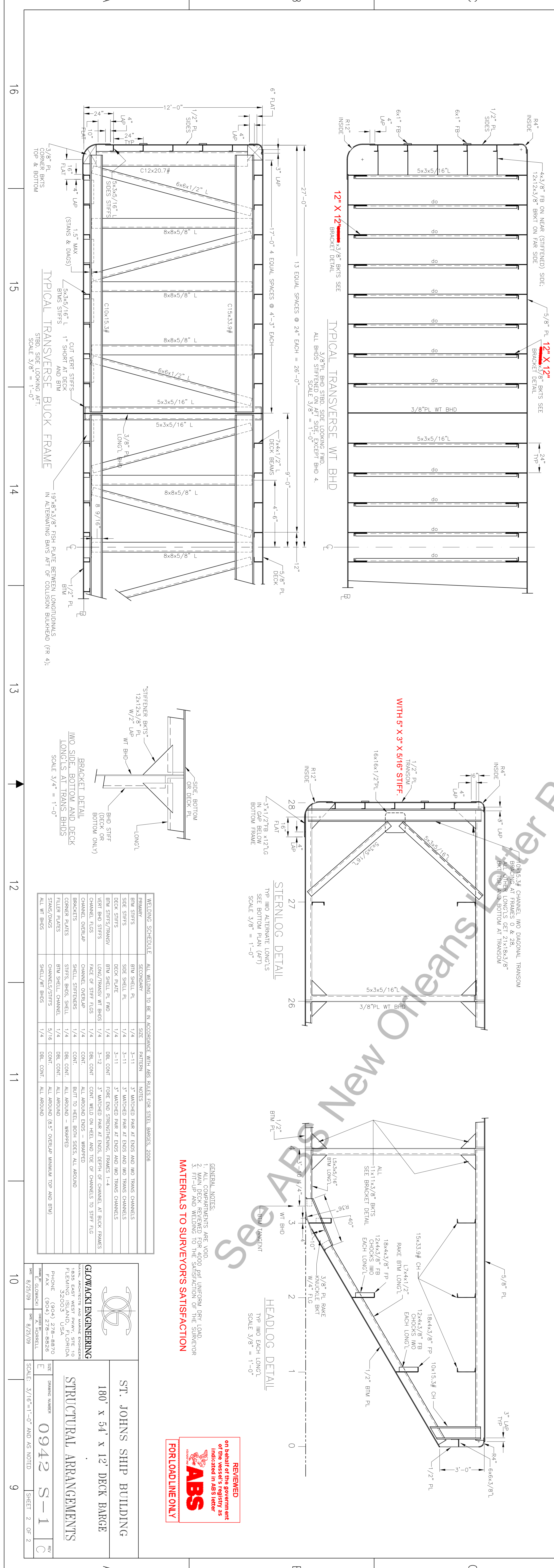
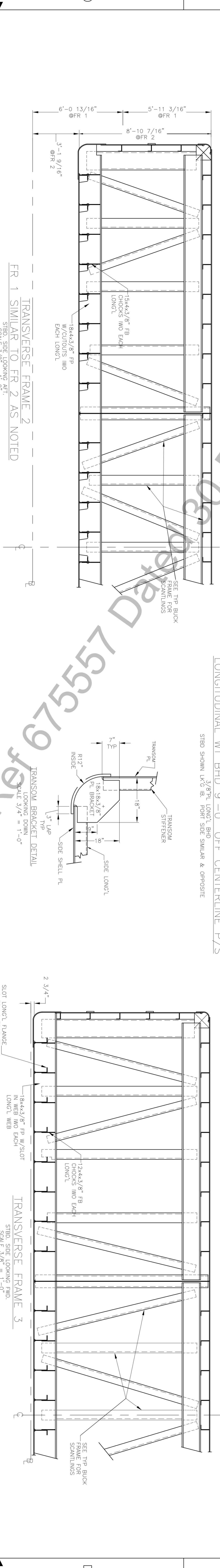
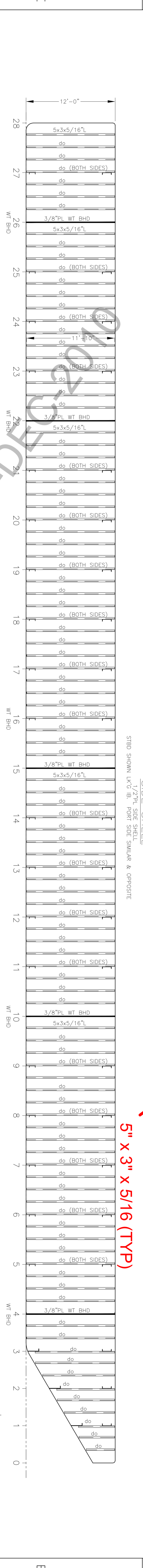
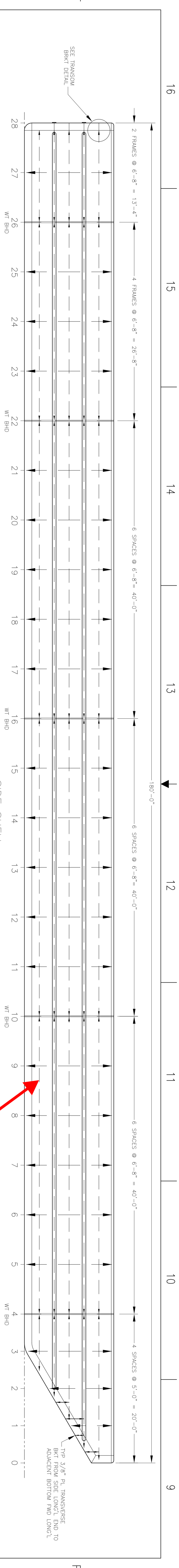
NO	TITLE	DRAWING NUMBER
1	SPUD WELL ARRGT & DETAILS	0942 S-2

ST. JOHNS SHIP BUILDING  
180' x 54' x 12' DECK BARGE  
STRUCTURAL ARRANGEMENTS  
0942 S-1

ST. JOHNS SHIP BUILDING, INC.  
GLOWACKI ENGINEERING  
180 EAST WEST Pkwy, Ste 10  
Tulahoma, TN 37188  
PHONE: (660) 278-4830  
FAX: (660) 278-8828

See ABS New Orleans Letter Ref 075557 Dated 30-DEC-2010





01030-D-02 Detail 3-03

See ABS New Orleans Letter Ref 675557

WELDING SCHEDULE	ALL WELDING TO BE IN ACCORDANCE WITH ABS RULES FOR STEEL BARRIES, 2008
PRIMARY	SECONDARY
BRK STIFFERS	BRK SHELL PL
SIDE STIFFS	SIDE SHELL PL
DECK STIFFS	DECK PLATE
BRK STIFFS/TRANSV	BRK SHELL PL W/O
BRK STIFFS	BRK STIFFS
CHOKERS/STRUTS	CHOKERS/STRUTS
CHANNEL OVERLAP	CHANNEL OVERLAP
CORNER PLATES	CORNER PLATES
STIFFERS	STIFFERS
STRUTS/CHOKERS	STRUTS/CHOKERS
ALL WT BHDS	SHELL/WT BHDS

**GENERAL NOTES:**

- ALL COMPARTMENTS ARE VOID.
- VOIDS ARE TO BE LINED WITH UNIFORM DEPT. LNDG.
- 5/8" PL W/O WELDING TO THE SATISFACTION OF THE SURVEYOR.
- MATERIALS TO SURVEYORS SATISFACTION

**GLOWACKI ENGINEERING**  
 32003 USA

**ST. JOHNS SHIP BUILDING**  
 180' x 54' x 12' DECK BARGE

**STRUCTURAL ARRANGEMENTS**  
 0942 S-1

SCALE: 3/16"=1'-0" AND AS NOTED

**ABS**  
 REQUIRED OF THE GOVERNMENT OF THE VESSEL'S REGISTRY AS INDICATED IN ABS LETTER

**FOR LOAD LINE ONLY**